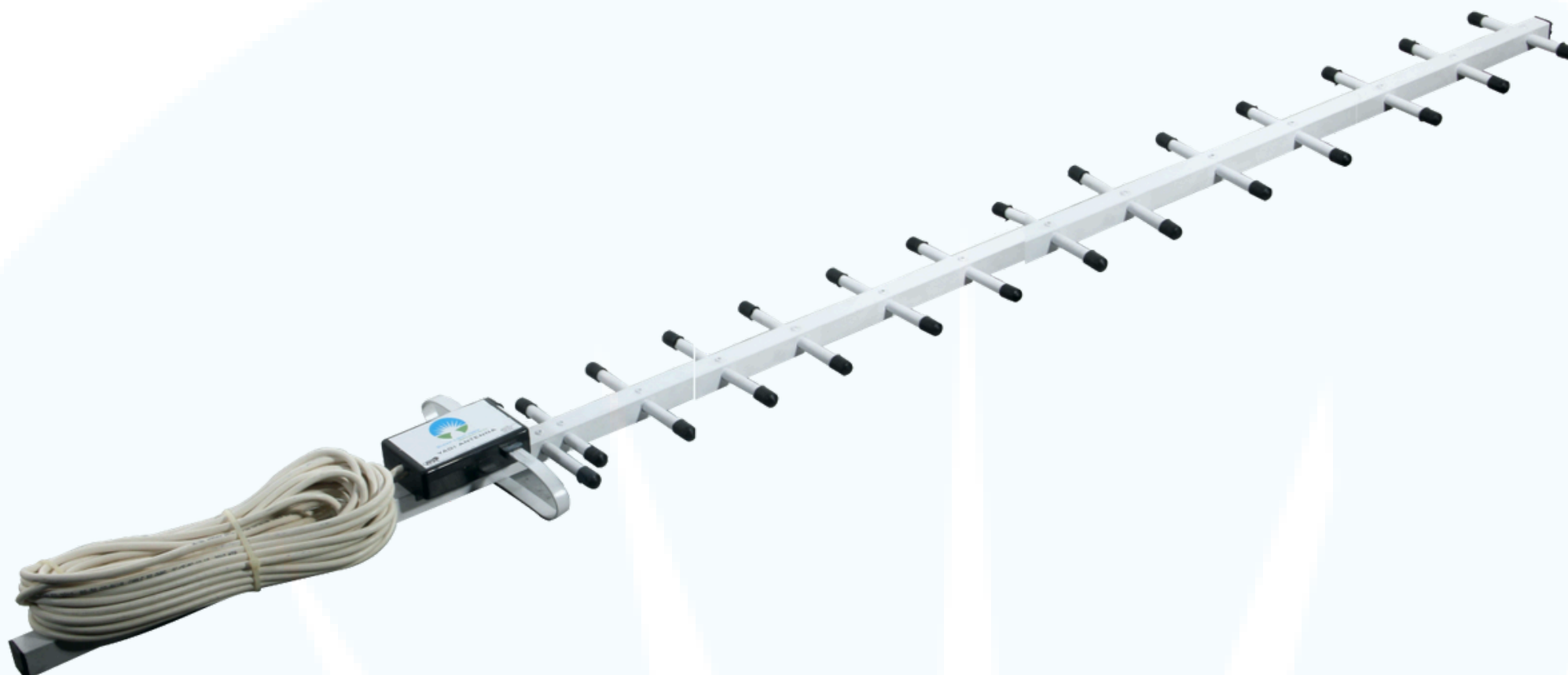


# Yagi Antenna 25 Dbi



An ISO 9001: 2015 Certified Company



## Technical Specifications

• Model No.	YAGOD4G025
• Frequency Range	698-960/1710-2700 MHz
• Beam Width	60±50°
• Polarization	Vertical
• Gain	25 DBI
• Lightning Protection	Direct Ground
• VSWR	<1.5
• Maximum Input Power	100W
• Impedance(ohm)	50
• Connector Type	SMA M/N F/ Customized
• Operating Temp	-40~+55°C
• Dimension	1150X220X50 mm
• Weight	700 Gram
• Mounting	Clamp Type / Pole Mount
• Cable Length	300 MM / Customized
• Cable	RG58
• Compliances	CE compliant
• ROHS	ROHS Compliant
• Brand	Gleam Light India

## FEATURES

- Wide Frequency Range
- Light Weight
- High gain
- Easy to Install
- Vertical or Horizontal Polarization
- All-Weather Operation
- Best for Outdoor applications.

[Click Here](#)



[Installation Guidance](#)

**CALL OR**  **+91-8800386366**

Follow Us For More Updates **GLEAMLIGHTINDIA** /     

Info@gleamlightindia.com/www.gleamlightindia.in/gleamlightindia.com/www.gleamindia.com

**GLEAM LIGHT INDIA PRIVATE LIMITED**

12B Block -A, Behind Kanishka Garden, Amar Colony Main Rohtak Road Nangloi, New Delhi, Delhi 110041

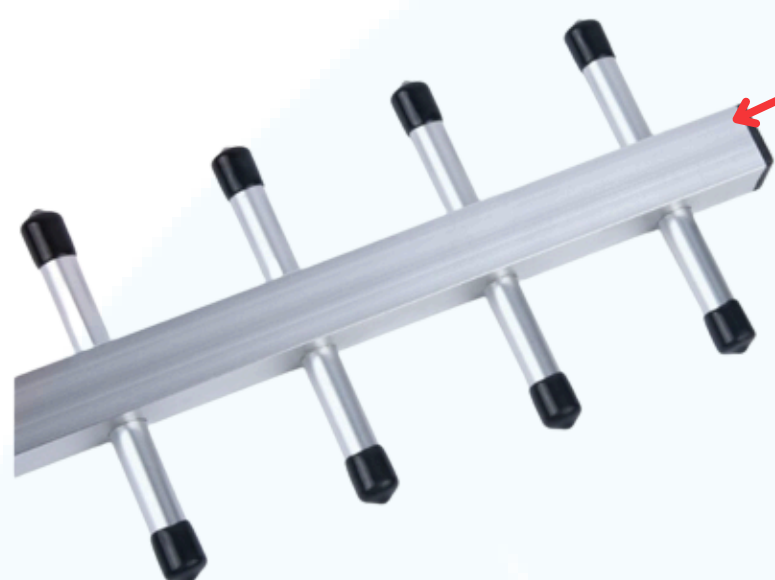


# Yagi Antenna 25 Dbi



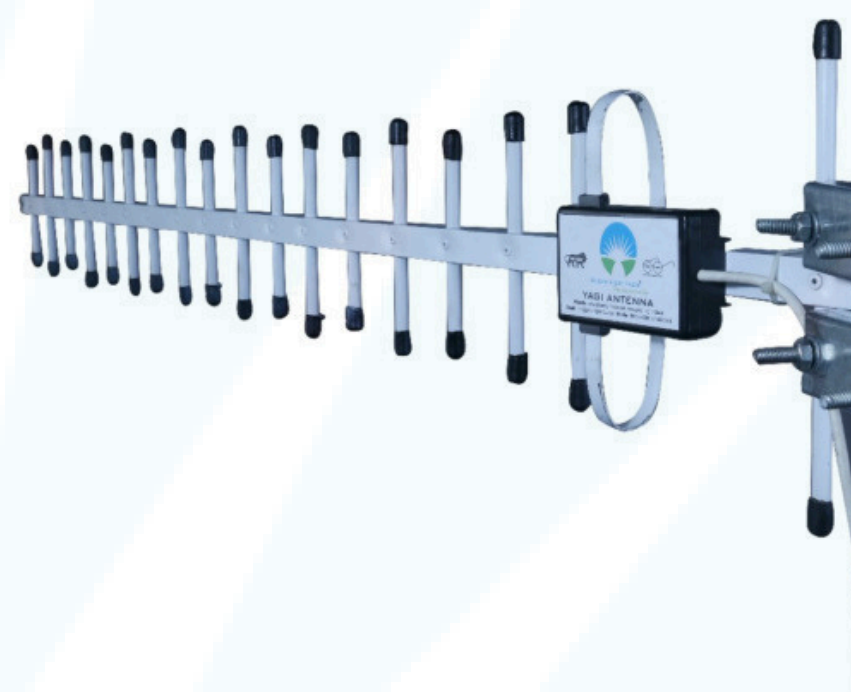
An ISO 9001: 2015 Certified Company

## High Quality Aluminium Structure

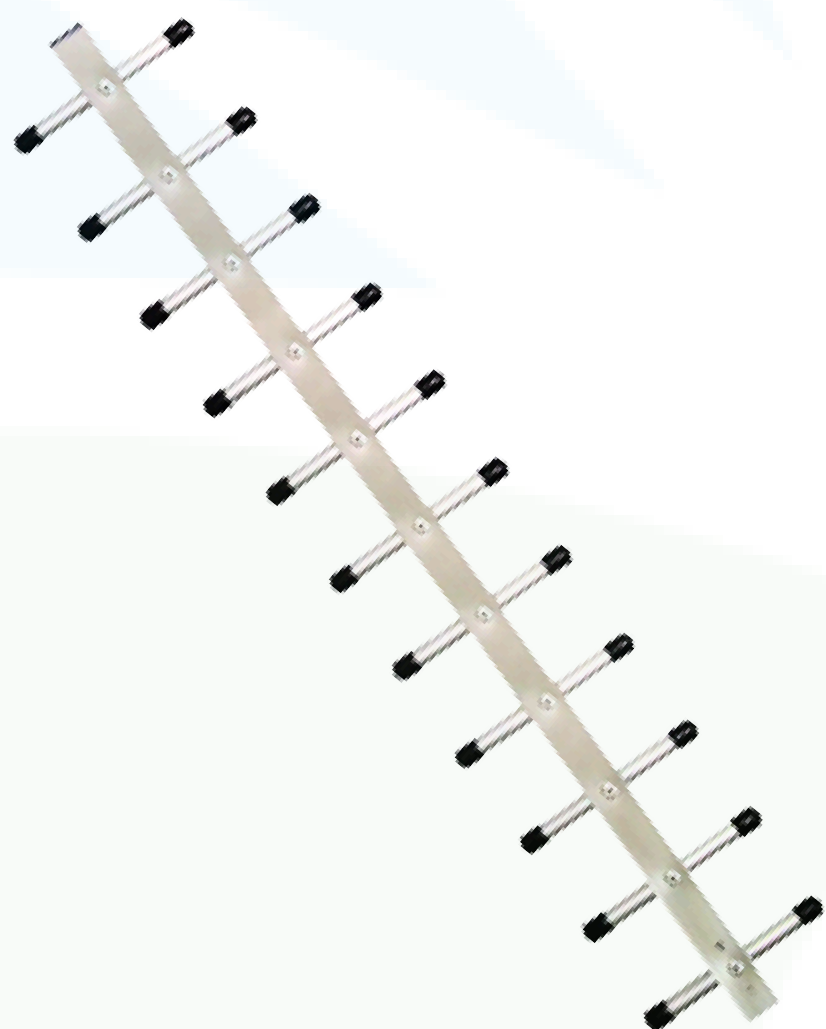


*The connections between elements and other components is secure and well-constructed to minimize losses and ensure stable performance over time.*

*The unique design of the yagi antenna feed which works as matching device to keep the VSWR low resulting in increased efficiency of the yagi with reflector.*



*The antenna is also be robust and reliable, with stable performance over time and in various environmental conditions.*



*A GSM Yagi antenna is a useful tool for improving the reliability and coverage of GSM networks, and can be used in a variety of applications.*



**CALL OR**  **+91-8800386366**

Follow Us For More Updates **GLEAMLIGHTINDIA** /     

[Info@gleamlightindia.com](mailto:Info@gleamlightindia.com) / [www.gleamlightindia.in](http://www.gleamlightindia.in) / [www.gleamlightindia.com](http://www.gleamlightindia.com) / [www.gleamindia.com](http://www.gleamindia.com)

**GLEAM LIGHT INDIA PRIVATE LIMITED**

12B Block -A, Behind Kanishka Garden, Amar Colony Main Rohtak Road Nangloi, New Delhi, Delhi 110041

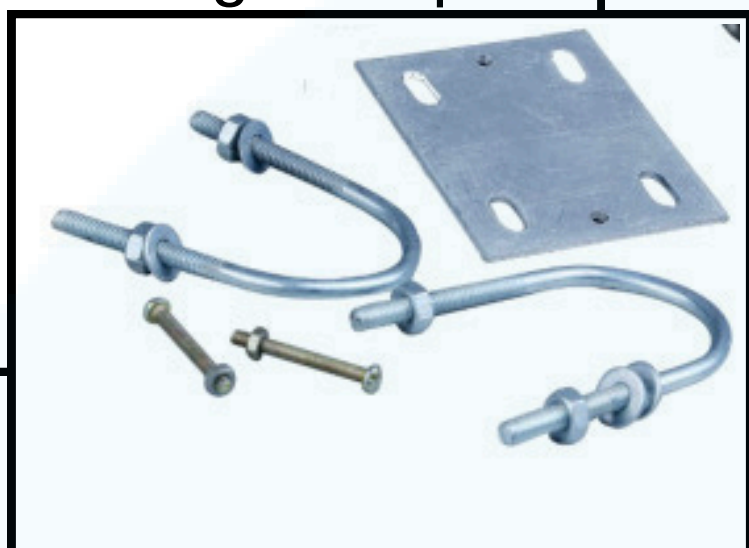


# Yagi Antenna 25 Dbi



An ISO 9001: 2015 Certified Company

Antenna  
Mounting Clamp



The clamps are designed to securely fasten the antenna to the support structure.

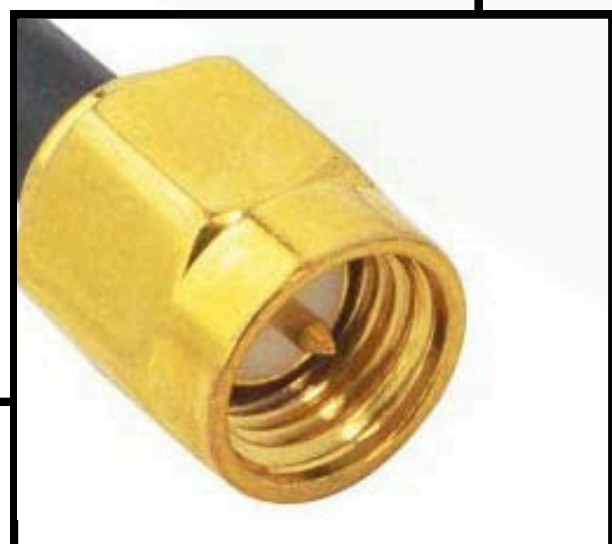


Cable  
Rg 58

N Female



SMA M



Customized Connector

**CALL OR**  **+91-8800386366**

Follow Us For More Updates **GLEAMLIGHTINDIA** /     

[Info@gleamlightindia.com](mailto:Info@gleamlightindia.com) / [www.gleamlightindia.in](http://www.gleamlightindia.in) / [www.gleamlightindia.com](http://www.gleamlightindia.com) / [www.gleamindia.com](http://www.gleamindia.com)

**GLEAM LIGHT INDIA PRIVATE LIMITED**

12B Block -A, Behind Kanishka Garden, Amar Colony Main Rohtak Road Nangloi, New Delhi, Delhi 110041

